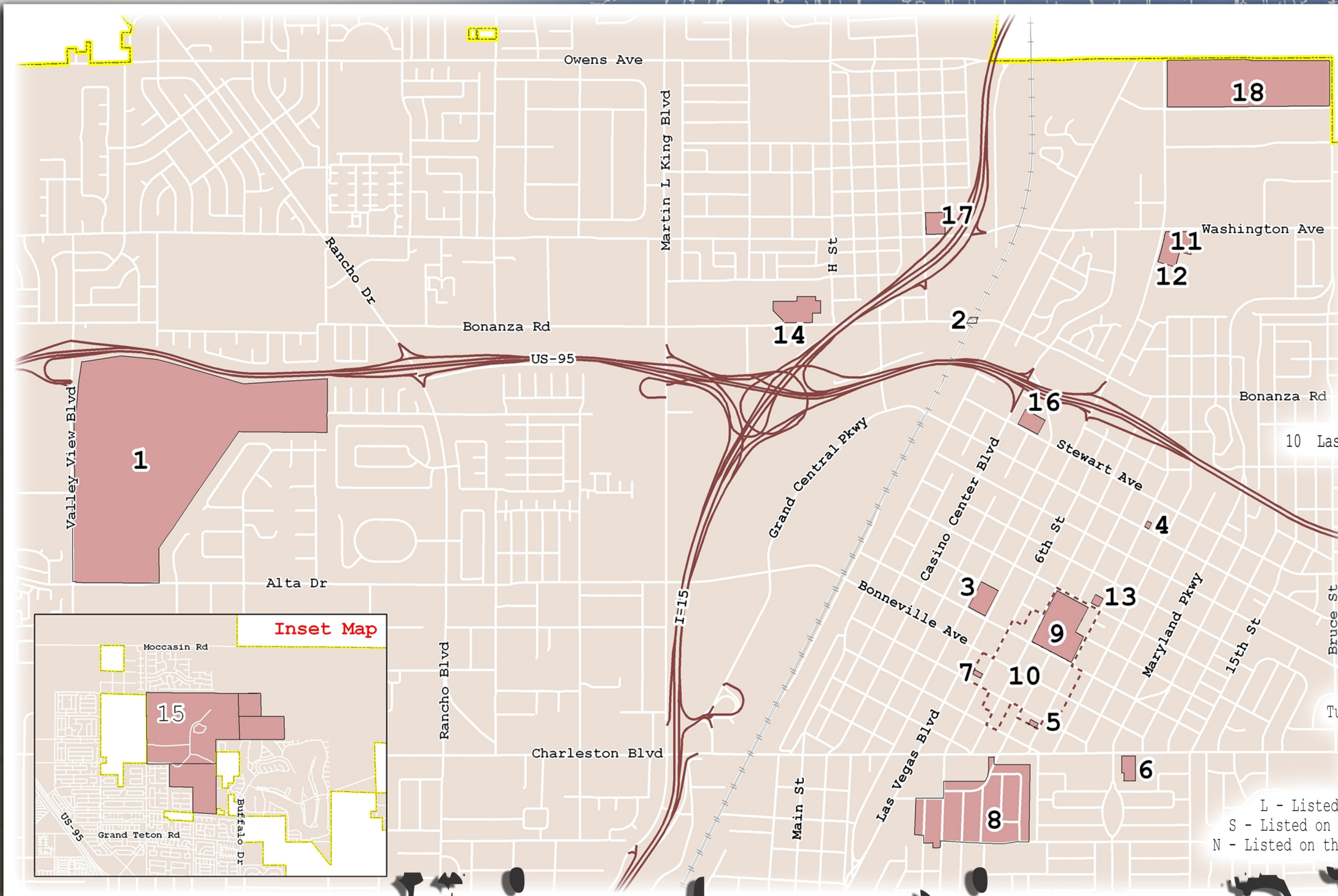


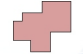


THE CITY OF LAS VEGAS

Properties and Districts



- Las Vegas Corporate Limits 
- Historic Districts 
- Historic Properties 

- 1 Big Springs/The Las Vegas Springs (S, N)
- 2 Clark Avenue (Bonanza Road) Underpass (N)
- 3 Fifth Street School (L, N)
- 4 Frank Wait House (L)
- 5 Henderson House (L, N)
- 6 Huntridge Theater (S, N)
- 7 Jay Dayton Smith House (N)
- 8 John S. Park Neighborhood Historic Dist. (L, N)
- 9 Las Vegas High School (L, N)
- 10 Las Vegas High School Neighborhood Historic Dist. (N)
- 11 Las Vegas Mormon Fort (S, N)
- 12 Las Vegas Mormon Fort Boundary Increase (N)
- 13 Morelli House (L, S)
- 14 Moulin Rouge Hotel (L, N)
- 15 Tule Springs Ranch (S, N)
- 16 U.S. Post Office and Courthouse (L, S, N)
- 17 Westside School (S, N)
- 18 Woodlawn Cemetary (N)

Not Shown:

- Eureka Locomotive - site restricted (N)
- Tule Springs Archeological Site - site restricted (N)
- Old Spanish Trail - site restricted (N)

Note:

- L - Listed on the City of Las Vegas Historic Property Register
- S - Listed on the Nevada Register of Historic Places for Las Vegas
- N - Listed on the National Register of Historic Places for Las Vegas

GIS maps are normally produced only to meet the needs of the City. Due to continuous development activity this map is for reference only. Geographic Information System Planning & Development Dept. 702-229-6301



Historic Places