

# Kent Falls State Park

*Kent, Connecticut*



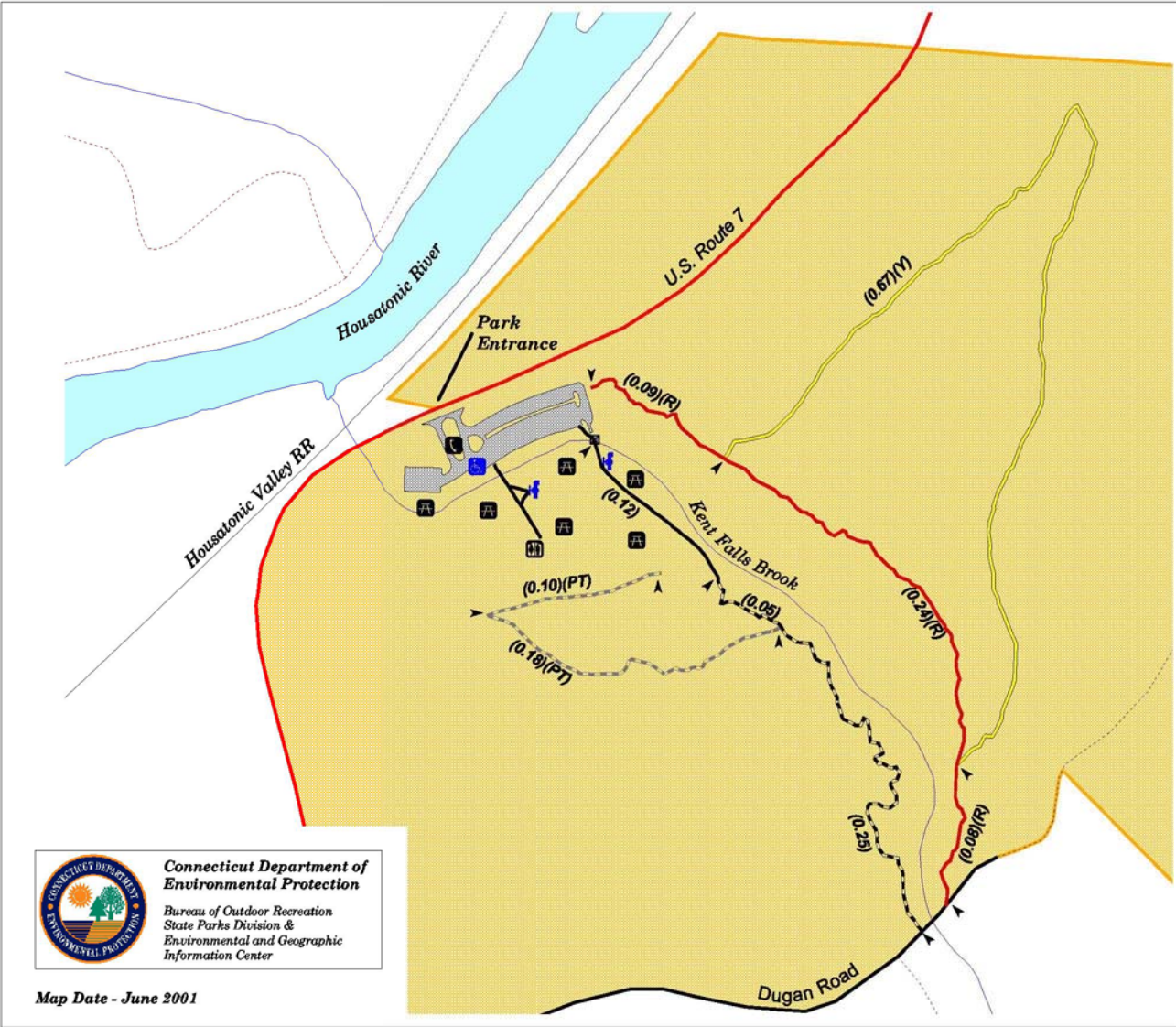
200 0 200 400 Feet

### Explanation

- Kent Falls Trail**
  - Trail
  - Accessible Trail
- North Ridge Trails**
  - Red (R)
  - Yellow (Y)
- Park Trails (PT)**
  - Park Trails (PT)
- Parking Area**
  - Parking Area
- Amenity**
  - Pay Phone
  - Water Spigot
  - Picnic Area
  - Bathroom (Handicapped Accessible)
  - Handicapped Parking
  - Covered Bridge
  - Kent Falls State Park

*Note: The boundaries of State-owned properties as shown on this map are approximate.*

**Trail distances between marks (▲) are in miles.**



**Connecticut Department of Environmental Protection**  
 Bureau of Outdoor Recreation  
 State Parks Division &  
 Environmental and Geographic Information Center

Map Date - June 2001