



MAP KEY

| | | | | | | | | | | | | | | | | | | | | | | | | | | | | | |
|-----------|------------------|------------------|----------|--------------------|-------------------------|----------------|----------------|----------------|--------------|---------------|--------------|-----------|------------------|------------------|--|---------------------|-----------|--------------|-----------|----------------|-------------|----------|--------|-------|-------------|------------|-----------|--------------------|--------------------|
| ● EASIEST | ● MORE DIFFICULT | ◆ MOST DIFFICULT | ◆ EXPERT | ● EASIEST WAY DOWN | ● EASY WAY TO WEST SIDE | ● SURFACE LIFT | ● DOUBLE CHAIR | ● TRIPLE CHAIR | ● QUAD CHAIR | ★ MID-STATION | ●●● XC TRAIL | ● EASIEST | ● MORE DIFFICULT | ◆ MOST DIFFICULT | ● HIKING TRAIL (Hiking trails NOT open to skiing and are shown for reference only) | ● FIRST AID STATION | ● TICKETS | ● SKI SCHOOL | ● RENTALS | ● TERRAIN PARK | ● HALF PIPE | ● NASTAR | ● FOOD | ● BAR | ● TELEPHONE | ● RESTROOM | ● PARKING | ● SLOW SKIING ZONE | ● PROPOSED TERRAIN |
|-----------|------------------|------------------|----------|--------------------|-------------------------|----------------|----------------|----------------|--------------|---------------|--------------|-----------|------------------|------------------|--|---------------------|-----------|--------------|-----------|----------------|-------------|----------|--------|-------|-------------|------------|-----------|--------------------|--------------------|

Belleayre Mountain is a year-round outdoor recreation facility operated by the New York State Department of Environmental Conservation.

Trails, Parks & Glades 47
Lifts 8
Summit 3,429 ft
Longest Trail 12,024 ft
Snowmaking 96%
Beginner 22%
Intermediate 58%
Expert 20%
Uphill Capacity/hr 10,980
Lodges 4
Vertical Drop 1,404 ft.
Total Acres 2,193
Skiable Acres 171
Cross-Country Trails 9 km

Hours of Operation
Lodges: 8 AM - 5 PM daily
Lifts: 9 AM - 4 PM daily
Info: 845-254-5600
E-mail: belleayre@belleayre.com
Lodging: 800-431-4555

The following are updated daily and as conditions warrant.
Snow Phone: 800-942-6904
Web: www.belleayre.com

WARNING TO SKIERS
 Downhill skiing, like many other sports, contains inherent risks including, but not limited to the risk of personal injury, or death, or property damage, which may be caused by variations in terrain or weather conditions, or surface or subsurface snow, ice, bare spots or areas of thin cover, moguls, ruts, bumps, or other persons using the facilities; or rocks, forest growth, debris, branches, trees, roots, stumps; or other natural objects or synthetic objects that are incidental to the provision or maintenance of a ski facility in New York State. New York Law imposes a duty on you, to become apprised of, and understand, the risks inherent in the sport of skiing, which are set forth above, so that you may make an informed decision of whether to participate in skiing notwithstanding the risks. New York Law also imposes additional duties upon you, to which you must adhere, for the purpose of avoiding injury caused by any of the risks inherent in skiing. If you are not willing to assume all of these risks and abide by all of these duties, you must not participate in skiing at this area. If you do choose to assume these risks, Know the Code of Responsibility! Keep your head up at all times. Always stay in control. Yield to the downhill skier. Observe all posted signs and warnings.

When the Snow Melts

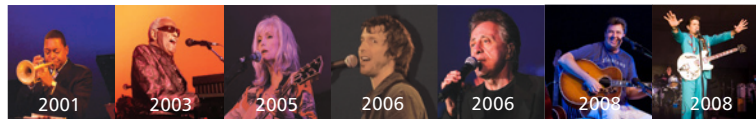
2009 Belleayre Music Festival

Where the mountains meet the stars!

The stars are on stage in the most intimate setting imaginable and up in the pristine Catskill sky illuminating the night! It's the perfect venue to enjoy an eclectic mix of music and performances. The sounds of country, rock and jazz join symphony, opera and dance in a magnificent setting atop Belleayre Mountain. For more information about the Belleayre Music Festival, call 800-942-6904, or visit www.belleayre.org. Look for the 2009 Belleayre Music Festival concert schedule in the spring on the web!



Past performers at the Belleayre Music Festival
Wynton Marsalis • Ray Charles
Emmylou Harris • James Blunt
Frankie Valli • Roberta Flack
• Los Lobos • Vince Gill
Chris Isaak



Belleayre Beach at Pine Hill Lake

Located at the base of the mountain, the Belleayre Beach at Pine Hill Lake offers a white-sand beach; lifeguard-supervised swimming; pedal boat, rowboat and kayak rentals; fishing; hiking, and picnic pavilions.

2009 Hours: May 25-June 7: Saturdays, Sundays and Holidays only; 10 AM-6 PM
June 13-September 1: Mon-Fri 10 AM-6 PM; Saturdays, Sundays and Holidays 10 AM-7:30 PM

Rates: Cars \$8; Walk-ins \$2; Motorcycles \$4; Buses \$20
Boat Rentals: Rowboats, \$6 per hour and \$12 for 4 hours
Pedal boats and Kayaks, \$6 per hour



Belleayre Mountain Sky Ride

Enjoy breathtaking views of the Catskill Forest Preserve from the summit of Belleayre Mountain. Take a hike, pack a picnic to enjoy on the deck of the Sunset Lodge or simply relax in the fresh air.

2009 Hours: July 4 - September 1; Open Saturdays, Sundays and Holidays, 10 AM - 5 PM; Re-opening for the Fall Festival, October 11 and 12, 10 AM - 5 PM.

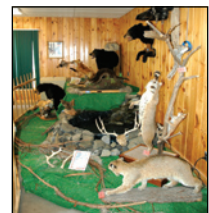
Rates: Adults \$8, Juniors 6-17 years old \$5, Seniors 62 and over \$5, Children 5 and under free when accompanied by a paying adult.

Group Rates: Call for pricing, 845-254-5600, ext. 2474
Children 8 years and under must ride the chair with an adult.

Belleayre Interactive Nature Center

Kids and adults alike will enjoy learning about the environment of the Catskill Mountains, all with a hands-on twist. Located in the Longhouse Lodge, just steps from the Sky Ride, the Nature Center has free admission and parking.

2009 Hours: July 4 - September 7; Mon-Fri, 9 AM - 3 PM; Saturday, Sunday and Holidays, 10 AM - 5 PM; September 8 - October 10; Mon-Fri, 9 AM - 3 PM; October 10 and 11 during the Fall Festival, 10 AM - 5 PM.



2009 Annual Fall Festival and Craft Fair

Join us Columbus Day Weekend, October 10 and 11, at the Overlook Lodge from 10 AM - 5 PM with free parking and admission. More than 100 quality arts and crafts vendors are highlighted, with live music, a kids' craft tent, Oktoberfest beer garden and a giant ski sale. Take the Sky Ride to the summit for the most spectacular view of peak fall foliage in the Catskills.

Please note all rates are subject to change.

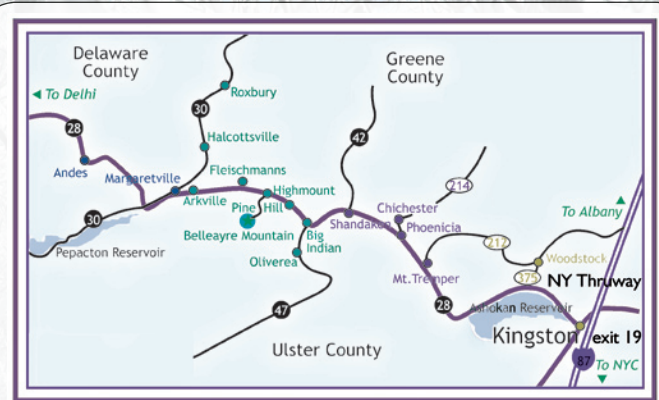
www.belleayre.com 800-942-6904

Belleayre Region Lodging and Tourism Association

www.catskillhighpeaks.com 800-431-4555

**Mid-Week Ski & Stay Packages
starting at \$49 ppdo includes lift tickets!**

Kids Ski Free and Stay Free!
Visit www.catskillhighpeaks.com
for more info about these deals
and other packages.



Only 2 hours from the NYC Metro Region is the Belleayre Region of the Catskill Mountains, a place of quaint mountain villages, filled with a variety of Bed & Breakfasts and Inns, and a wide selection of Restaurants and Resorts, from family-style to four star. Not only is Belleayre the closest major ski area to the Metro Region, but the Belleayre Region Lodging and Tourism Association members have the best deals, such as **Kids Ski Free and Stay Free** ages 14 and under at participating establishments or **midweek packages starting from \$49pp/do.**

Just visit www.catskillhighpeaks.com for more details about all of the great deals and packages offered by the Belleayre Region Lodging and Tourism Association.



photo provided by eOnemedia.com

www.catskillhighpeaks.com 800-431-4555

Rates and Values

Full-Day Lift Ticket Please note all rates are subject to change.

| | Weekend/Holiday | Midweek | Half-Day (12-4 pm) |
|-----------------------------------|-----------------|---------|----------------------------|
| Adult (18-61) | \$54 | \$45 | \$44 weekends/\$36 weekday |
| Senior (62-69) | \$44 | \$40 | \$39 weekends/\$35 weekday |
| College Student (w/valid ID) | \$44 | \$40 | \$39 weekends/\$35 weekday |
| Junior (13-17) | \$44 | \$40 | \$39 weekends/\$35 weekday |
| Youth (6-12) | \$38 | \$35 | \$32 weekends/\$28 weekday |
| Toddler (5 & under) | \$11 | \$11 | \$11 |
| 70+ (Gold Pass) | Always Free! | | |
| Early Season: Opening Day - 12/10 | \$43 | \$38 | |
| Late Season: 3/19 - Closing Day | \$43 | \$38 | |
| Groups of 15+ (includes lesson) | \$40 | \$34 | |

2-Day Lift Ticket

| | | |
|------------------------------|------|------|
| Adult (18-61) | \$96 | \$78 |
| Senior (62-69) | \$80 | \$72 |
| College Student (w/valid ID) | \$80 | \$72 |
| Junior (13-17) | \$80 | \$72 |
| Youth (6-12) | \$70 | \$62 |

Lift, Lesson & Rental

| | | |
|---------------------|------|------|
| Adult | \$92 | \$84 |
| Youth/Junior (6-17) | \$82 | \$72 |

Rentals

| | Adult | Jr. |
|---------|----------|----------|
| 1 day | \$33 | \$25 |
| 2 day | \$64 | \$48 |
| 3 day | \$93 | \$71 |
| 5 day | \$145 | \$105 |
| 1/2 day | \$27 | \$21 |
| Helmets | \$13/day | \$13/day |

Child Care

For ages 1-6: \$37 full day, \$32 1/2 day, \$14/hr.
Call x2444 for details.

Season Passes

| | Through 11/30/08 | After 11/30 |
|---------------------|------------------|-------------|
| Adult | \$676 | \$726 |
| Youth/Junior (6-17) | \$215 | \$265 |
| College | \$254 | \$304 |
| Senior (62-69) | \$585 | \$635 |
| Midweek (M-F) | \$276 | \$326 |
| Transferable | \$1200 | \$1200 |

Lessons

| | |
|--|-------|
| Beginner Group Ski/Snowboard Clinic (8+) | \$15 |
| Beginner Group Ski Clinic (Age 5-7) | \$12 |
| Any Level Group Ski/Snowboard Clinic | \$30 |
| Any Level Private Clinic | \$65 |
| All-Day Private Clinic | \$325 |
| 1/2-Day Private Clinic | \$162 |

2008-2009 Discount Days

November

| | |
|--------|--|
| Fri 23 | Opening Day Day after Thanksgiving Special - \$25 Lift Tickets |
|--------|--|

December

| | |
|----------------|--|
| Fri 12 | Customer Appreciation Day - \$25 Lift Tickets |
| Th - Th 25-1/1 | Holiday Period - weekend rates |
| Tues 25 | Christmas Day Special - \$25 Lift Tickets |

January

| | |
|---------------|--|
| Sun 4 | Potter Bros. Flex Day |
| Fri 9 | Customer Appreciation Day - \$25 Lift Tickets |
| Sat-Mon 17-19 | MLK Holiday Period - weekend rates |
| Mon-Fri 26-30 | Winter Festival Week - \$20 Lift Tickets |

February

| | |
|----------------|--|
| Sun 1 | Potter Bros. Flex Day |
| Fri 13 | Customer Appreciation Day - \$25 Lift Tickets |
| Sat-Mon 14-16 | Holiday Period - weekend rates |
| Tues-Fri 17-20 | Holiday Period - non-weekend rates |

March

| | |
|--------|--|
| Sun 8 | Potter Bros. Flex Day |
| Fri 13 | Customer Appreciation Day - \$25 Lift Tickets |
| Sun 23 | Easter Day Special - \$25 Lift Tickets |

April

| | |
|--------|--|
| Fri 11 | Customer Appreciation Day - \$25 Lift Tickets |
| Sun 23 | Easter Day Special - \$25 Lift Tickets |

For the complete events calendar,
visit our website www.belleayre.com.

www.belleayre.com

800-942-6904

BELLEAYRE MOUNTAIN



2008-2009 Trail Map

NEW YORK'S WINTER SNOW PARK
www.belleayre.com 800-942-6904

Belleayre Mountain is a year-round outdoor recreation facility operated by the New York State Department of Environmental Conservation.

BELLEAYRE MOUNTAIN



2008-2009 Trail Map

NEW YORK'S WINTER SNOW PARK
www.belleayre.com 800-942-6904

Belleayre Mountain is a year-round outdoor recreation facility operated by the New York State Department of Environmental Conservation.